

इंटरनेट

मानक

Disclosure to Promote the Right To Information

Whereas the Parliament of India has set out to provide a practical regime of right to information for citizens to secure access to information under the control of public authorities, in order to promote transparency and accountability in the working of every public authority, and whereas the attached publication of the Bureau of Indian Standards is of particular interest to the public, particularly disadvantaged communities and those engaged in the pursuit of education and knowledge, the attached public safety standard is made available to promote the timely dissemination of this information in an accurate manner to the public.

“जानने का अधिकार, जीने का अधिकार”

Mazdoor Kisan Shakti Sangathan

“The Right to Information, The Right to Live”

“पुराने को छोड़ नये के तरफ”

Jawaharlal Nehru

“Step Out From the Old to the New”

IS 10482-2 (1983): Connectors for Printed Wiring Board, Part 2: Male Adapter, Contact Spacing 3.962 mm, Category C, Type 10482 IS-01-6/10/12/15/16/18/22-a/b-2-A-5/1.27 OR 2.54/0.4 [LITD 3: Electromechanical Components and Mechanical Structures for Electronic Equipment]



“ज्ञान से एक नये भारत का निर्माण”

Satyanarayan Gangaram Pitroda

“Invent a New India Using Knowledge”



“ज्ञान एक ऐसा खजाना है जो कभी चुराया नहीं जा सकता है”

Bhartrhari—Nitiśatakam

“Knowledge is such a treasure which cannot be stolen”

BLANK PAGE





Indian Standard

SPECIFICATION FOR CONNECTORS FOR PRINTED WIRING BOARD

PART 2 MALE ADAPTER, CONTACT SPACING 3.962 mm, CATEGORY C, TYPE 10482 IS-01-6/10/12/15/16/18/22- a/b-2-A-5/1.27 OR 2.54/0.4

0. General — This standard shall be read in conjunction with IS : 10482 (Part 1)-1983 ' Specification for connectors for printed wiring board: Part 1 Test schedule and requirements '.

1. Type Designation — See 4 of IS : 10482 (Part 1)-1983.

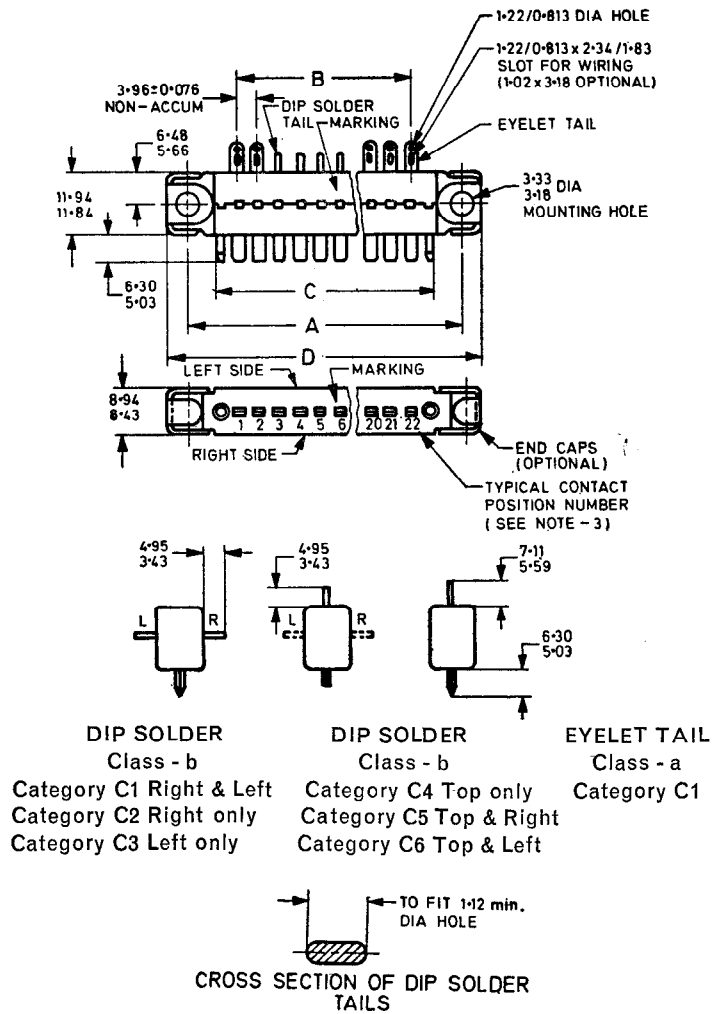
1.1 The types of connectors covered in this standard are designated as given below:

- | | |
|---------------------------------|-----------------------------------|
| 1) 10482 IS-01-6-a-2-A-5/1.27 | 15) 10482 IS-01-6-a-2-A-2.54/0.4 |
| 2) 10482 IS-01-6-b-2-A-5/1.27 | 16) 10482 IS-01-6-b-2-A-2.54/0.4 |
| 3) 10482 IS-01-10-a-2-A-5/1.27 | 17) 10482 IS-01-10-a-2-A-2.54/0.4 |
| 4) 10482 IS-01-10-b-2-A-5/1.27 | 18) 10482 IS-01-10-b-2-A-2.54/0.4 |
| 5) 10482 IS-01-12-a-2-A-5/1.27 | 19) 10482 IS-01-12-a-2-A-2.54/0.4 |
| 6) 10482 IS-01-12-b-2-A-5/1.27 | 20) 10482 IS-01-12-b-2-A-2.54/0.4 |
| 7) 10482 IS-01-15-a-2-A-5/1.27 | 21) 10482 IS-01-15-a-2-A-2.54/0.4 |
| 8) 10482 IS-01-15-b-2-A-5/1.27 | 22) 10482 IS-01-15-b-2-A-2.54/0.4 |
| 9) 10482 IS-01-16-a-2-A-5/1.27 | 23) 10482 IS-01-16-a-2-A-2.54/0.4 |
| 10) 10482 IS-01-16-b-2-A-5/1.27 | 24) 10482 IS-01-16-b-2-A-2.54/0.4 |
| 11) 10482 IS-01-18-a-2-A-5/1.27 | 25) 10482 IS-01-18-a-2-A-2.54/0.4 |
| 12) 10482 IS-01-18-b-2-A-5/1.27 | 26) 10482 IS-01-18-b-2-A-2.54/0.4 |
| 13) 10482 IS-01-22-a-2-A-5/1.27 | 27) 10482 IS-01-22-a-2-A-2.54/0.4 |
| 14) 10482 IS-01-22-b-2-A-5/1.27 | 28) 10482 IS-01-22-b-2-A-2.54/0.4 |

2. Outline and Dimensions — The outline and dimensions shall be according to Fig. 1 and Table 1.

3. Material, Finish and Life Requirement — The material, finish and life requirement shall be as given below depending upon the use of the connectors:

	<i>Professional Grade</i>	<i>Consumer Grade</i>
a) Material	Glass filled DAP or Glass filled phenolic	General purpose phenolics
b) Contacts		
i) Male	Brass	Brass
ii) Female	Beryllium Copper or Phosphor bronze	Beryllium Copper or Phosphor bronze
c) Finish	1.27 μm gold over 5 μm nickel or copper	0.4 μm gold over 2.54 μm nickel or copper
d) Mechanical life	500 mating cycles	500 mating cycles



DIP SOLDER Class - b
 Category C1 Right & Left
 Category C2 Right only
 Category C3 Left only

DIP SOLDER Class - b
 Category C4 Top only
 Category C5 Top & Right
 Category C6 Top & Left

EYELET TAIL Class - a
 Category C1

All dimensions in millimetres.

Note 1 — For dimensions, see Table 1.

Note 2 — Unless otherwise specified tolerances are ± 0.38 mm.

Note 3 — Contacts and terminals shall be designated on the connectors using raised numerals in the location shown. The bottom designation shall correspond with the top designation in designating the same contact.

Note 4 — End caps shall introduce no condition of floating to the connector when mounted.

FIG. 1 OUTLINE DIMENSIONS AND DRAWING

TABLE 1 DIMENSIONS

(Clause 2 and Fig. 1)

All dimensions in millimetres.

Types of Connectors	Contact Spacing	A ± 0.254	B ± 0.177	C		D ± 0.889
				Max	Min	
10482 IS-01- 6-a/b-2-A-5/1.27 or 2.54/0.4	3.962	38.89	19.84	27.74	27.23	45.15
10482 IS-01-10-a/b-2-A-5/1.27 or 2.54/0.4	3.962	54.8	35.71	43.641	43.133	62.03
10482 IS-01-12-a/b-2-A-5/1.27 or 2.54/0.4	3.962	62.7	43.633	51.562	51.054	70.00
10482 IS-01-15-a/b-2-A-5/1.27 or 2.54/0.4	3.962	74.6	55.548	63.479	62.929	81.841
10482 IS-01-16-a/b-2-A-5/1.27 or 2.54/0.4	3.962	78.5	59.5		67.3	85.9
10482 IS-01-18-a/b-2-A-5/1.27 or 2.54/0.4	3.962	86.51	67.46	75.36	74.85	93.78
10482 IS-01-22-a/b-2-A-5/1.27 or 2.54/0.4	3.962	102.4	83.335	91.239	90.731	109.648

4. Climatic Category — The climatic category shall be applicable as given below depending upon the use of the connectors:

	<i>Professional Grade</i>	<i>Consumer Grade</i>
a) Temperature severity	— 65°/125°C	— 10°/70°C
b) Damp heat severity	56 days	21 days
c) Low air pressure	4.4 kPa	Not applicable
d) Acceleration (steady state)	500 m/s ²	Not applicable
e) Vibration	10-2 000 Hz	10-55 Hz
f) Shock	1 km/s ²	Not applicable
g) Bump	4 000 bumps at 40 g	1 000 bumps at 40 g

5. Electrical Ratings — The rated voltage shall be 600 volts ac (rms) for professional grade and 250 volts ac (rms) for consumer grade. The current shall be 5 amp, *Max*, for both the grades.

6. Tests — See 8 of IS : 10482 (Part 1)-1983.

7. Requirements

7.1 The connector shall comply with the following requirements:

<i>Characteristics</i>	<i>Requirements</i>	
	<i>Professional Grade</i>	<i>Consumer Grade</i>
a) Dimensions	See Fig. 1 and Table 1	
b) Insulation resistance		
i) For zero group	5 000 MΩ, <i>Min</i> at 500 V (dc)	500 MΩ <i>Min</i> at 100 V (dc)
ii) For other groups	500 MΩ, <i>Min</i> at 500 V (dc)	50 MΩ at 100 V (dc)
c) Test current for contact resistance	5A	1 A
d) Insertion and withdrawal force	Insertion and withdrawal force shall be checked by hand only	

8. Marking — See 8 of IS : 10482 (Part 1)-1983.